

Software License

# Activation Guide

Ver. 1.0

## Copyright

Copyright © 2020 Nordbo Robotics A/S. All Rights Reserved. No part of this manual may be reproduced or transmitted in any form or by any means, electronic or mechanical, including photocopying and recording, for any purpose without the express written permission of Nordbo Robotics A/S.

## Disclaimer

The information provided in this documentation contains general descriptions of use, of one or more of Nordbo Robotics' products. Following this documents instruction for installation and use must not be considered a substitute for making a risk assessment and testing the specific application and setup. Neither Nordbo Robotics nor any of our affiliates or subsidiaries shall be held responsible for the consequences that arise from misuse of – or misunderstanding– any information stated in this document.

If any instructions are considered unclear it is the user's responsibility to contact Nordbo Robotics for clarification of the issue(s) before making use of said unclear instructions.

If the user has any suggestions for improvements, amendments or if errors have been found in this release, please notify Nordbo Robotics.

Nordbo Robotics reserves the right to make refinements or changes without notice.

## Contact

Nordbo Robotics A/S  
Agerhatten 27A Entrance 4  
5220 Odense, Denmark

Phone: +45 81 81 98 81  
Mail: [info@nordbo-robotics.com](mailto:info@nordbo-robotics.com)

## 1. Activating License on Industrial PCs

The following guide elaborates how to activate a license when using an industrial PC.



Figure 1: OnLogic ML100G-51 Industrial PC

### Step 1

Open a terminal and execute: "nlock-ui", to open the license GUI (figure 2).

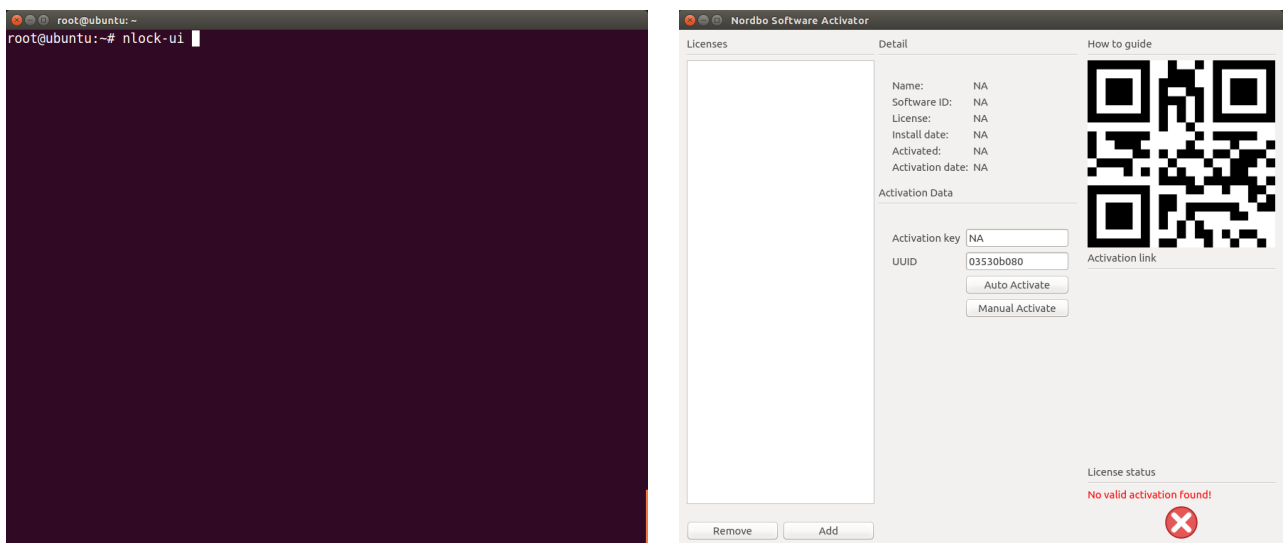


Figure 2: License GUI

## Step 2

Follow the steps to add a license to the system. Click “Add” to add a license (figure 3), and fill out the following fields:

**Local ID:** Pick a name for the license and enter it under “Local ID”

**Software ID:** Change the “Software ID” dropdown menu to match the software type.

**License key:** Enter the supplied license key.

**(Optionally) Description:** Enter a comment if necessary.

Click “Add” to finish adding the license.

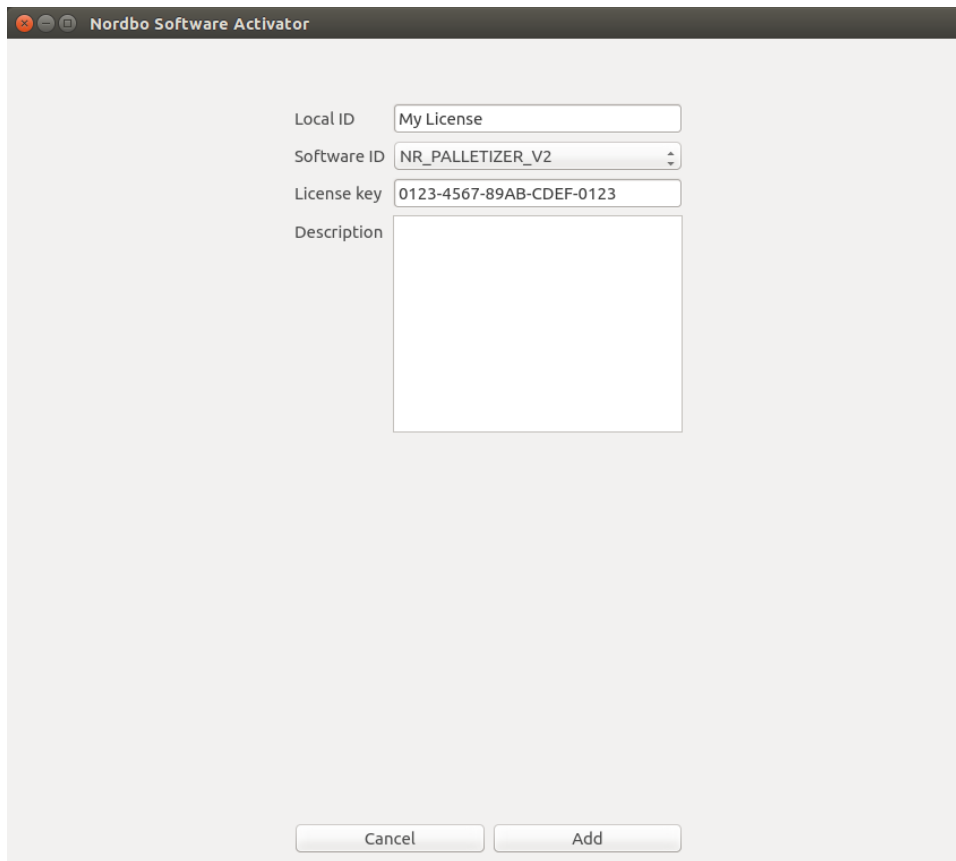
The screenshot shows a window titled "Nordbo Software Activator". Inside the window, there are four input fields: "Local ID" with the text "My License", "Software ID" with a dropdown menu showing "NR\_PALLETIZER\_V2", "License key" with the text "0123-4567-89AB-CDEF-0123", and "Description" with an empty text area. At the bottom of the window, there are two buttons: "Cancel" and "Add".

Figure 3: Add license

## Step 3

You have the option between activating using an internet connection, or by doing it manually.

## 1.1. Automatic activation

### Step 4

Connect the system to the internet.

### Step 5

In the license GUI, click the “Auto Activate” button (figure 4).

### Step 6

A popup will appear, informing you of the success of the activation.

### Step 7

If successful, the “License status” will now change to “Valid activation found!” and your system is ready to run!

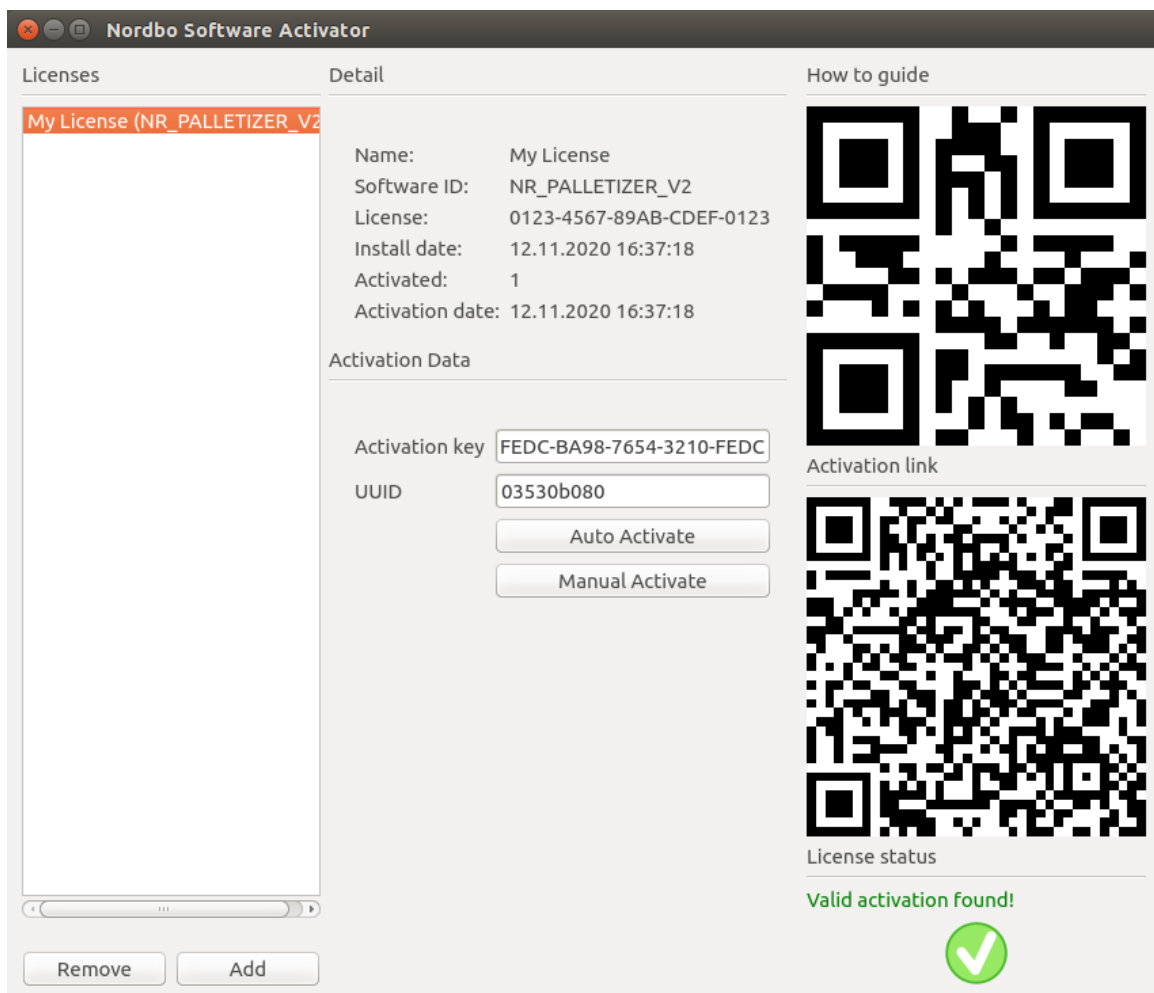


Figure 4: “Auto Activation”

## 1.2. Manual activation, QR Code

### Step 4

Scan the bottom right QR code and open the website link.

### Step 5

On the Nordbo Activate website, click the “Activate” button (figure 5).

## 1.3. Manual activation, UUID

### Step 4

Open a web browser and go to [activate.nordbo-robotics.dk](https://activate.nordbo-robotics.dk).

### Step 5

On the Nordbo Activate website, type in the license key in the “License KEY” field and the UUID in the “Activation ID” field, then click the “Activate” button (figure 5).

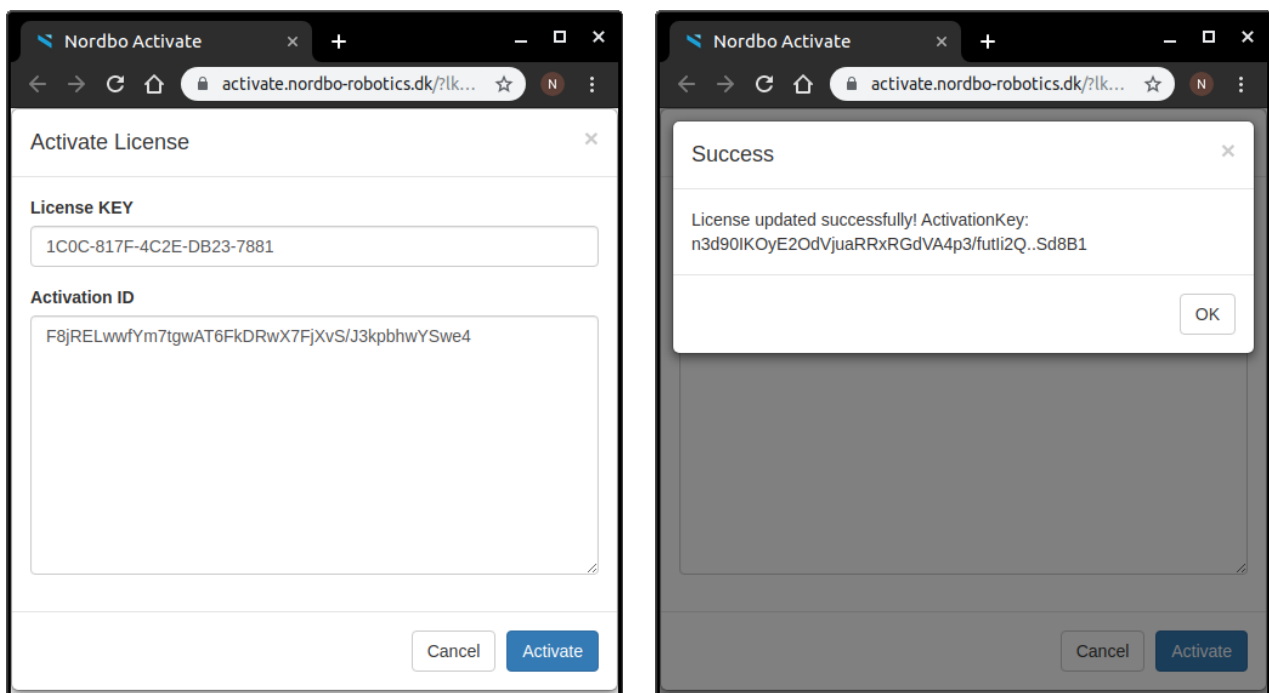


Figure 5: Activate license

## Step 6

You will receive a pop-up and an email containing a copy of the activation key sent from "Nordbo license" ([nordborobotics@web22.gigahost.dk](mailto:nordborobotics@web22.gigahost.dk)).

## Step 7

Copy the activation key from either the popup or the email.

## Step 8

Go to the license GUI, click "Manual Activate", enter your "Activation Key" and click "OK" (figure 6).

## Step 9

If successful, the "License status" will now change to "Valid activation found!" and your system is ready to run!

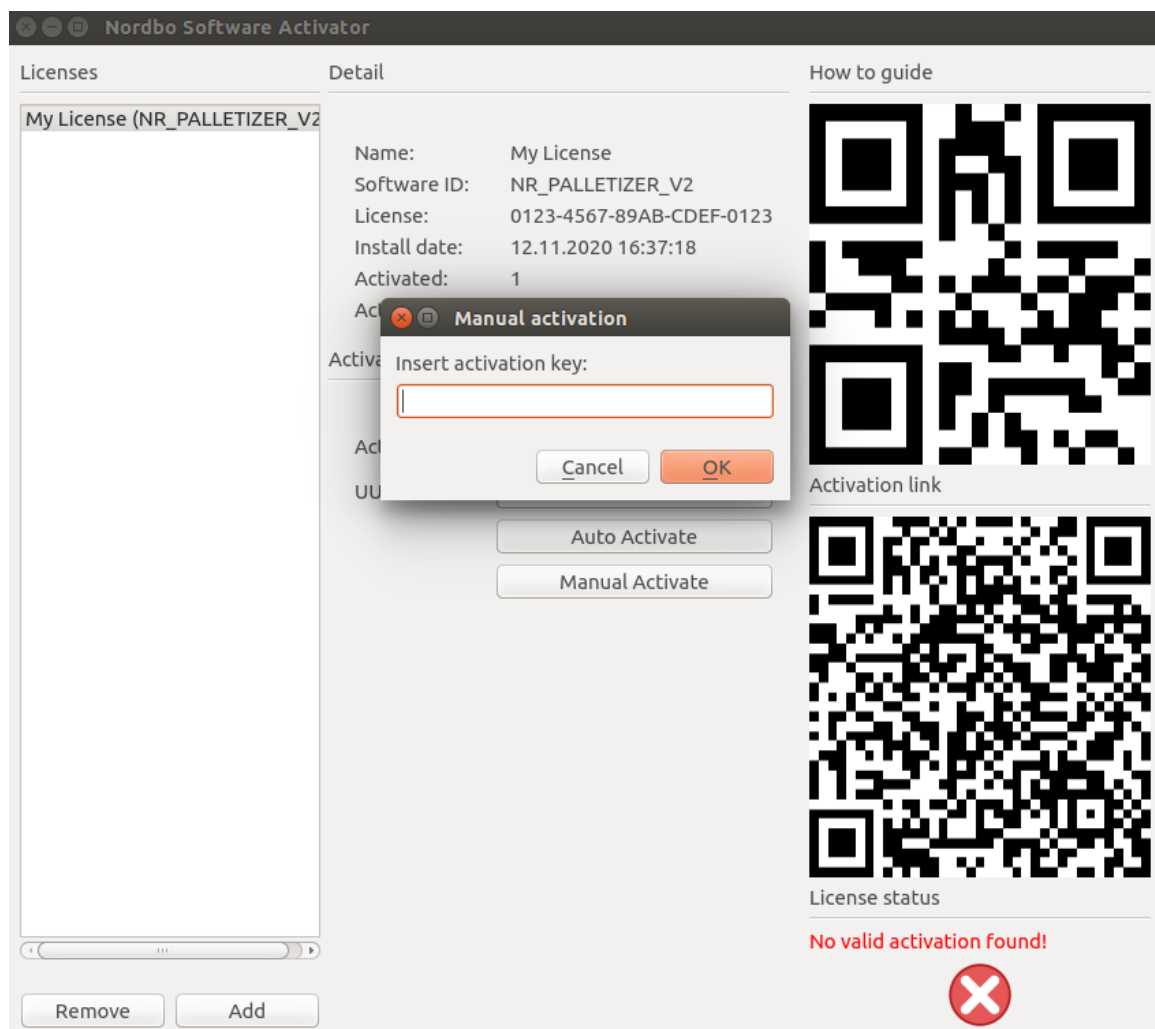


Figure 6: Insert activation key

## 2. Activating License on AUBO Robots

### Step 1

Navigate to the "Extensions" tab and locate the Nordbo extension you want to activate a license for. Then go to the "License" tab (figure 7).

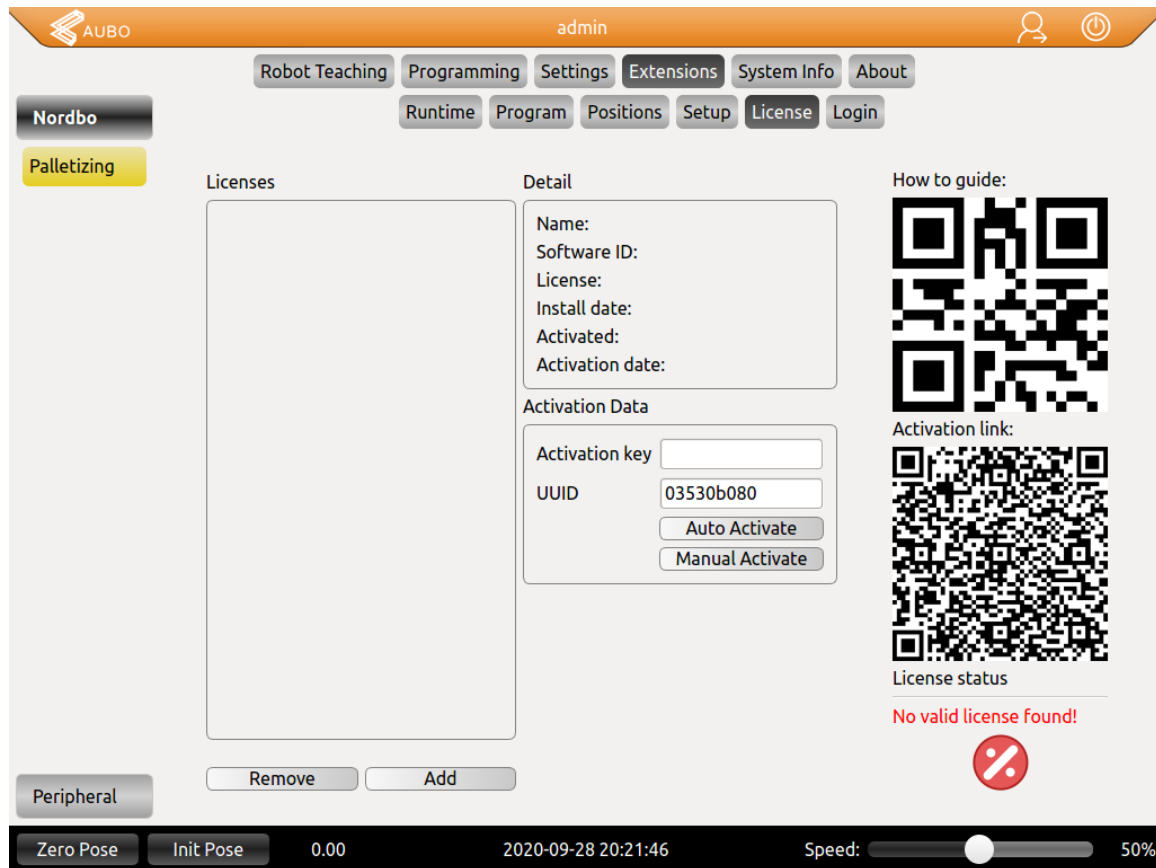


Figure 7: License tab



## Step 2

Follow the steps to add a license to the system. Click "Add", to add a license, and fill out the following fields:

**Local ID:** Pick a name for the license and enter it under "Local ID"

**Software ID:** Change the "Software ID" dropdown menu to match the software type.

**License key:** Enter the supplied license key.

**(Optionally) Description:** Enter a comment if necessary.

Click "Add" to finish adding the license.



The screenshot shows the Nordbo Robotics software interface. The top navigation bar includes 'AUBO' and 'admin' tabs. The sidebar on the left has 'Nordbo' and 'Palletizing' buttons. The main area contains a form for adding a license with the following fields:

- Local ID:
- Software ID:
- License key:
- Description:

To the right of the form, there is a 'How to guide' section with a QR code and an 'Activation link' section with another QR code. Below the QR codes, the 'License status' is shown as 'No valid license found!' with a red error icon. At the bottom, there are 'Cancel' and 'Add' buttons. The status bar at the very bottom shows 'Zero Pose', 'Init Pose', '0.00', '2020-09-28 20:24:09', 'Speed: 50%', and a slider.

Figure 8: Add license

## Step 3

You have the option between activating using an internet connection, or by doing it manually.

## 2.1. Automatic activation

### Step 4

Connect the robot to the internet.

### Step 5

In the Nordbo extension license tab, click the "Auto Activate" button (figure 9).

### Step 6

A popup will appear, informing you of the success of the activation.

### Step 7

If successful, the "License status" will now change to "Valid license found!" and your system is ready to run!

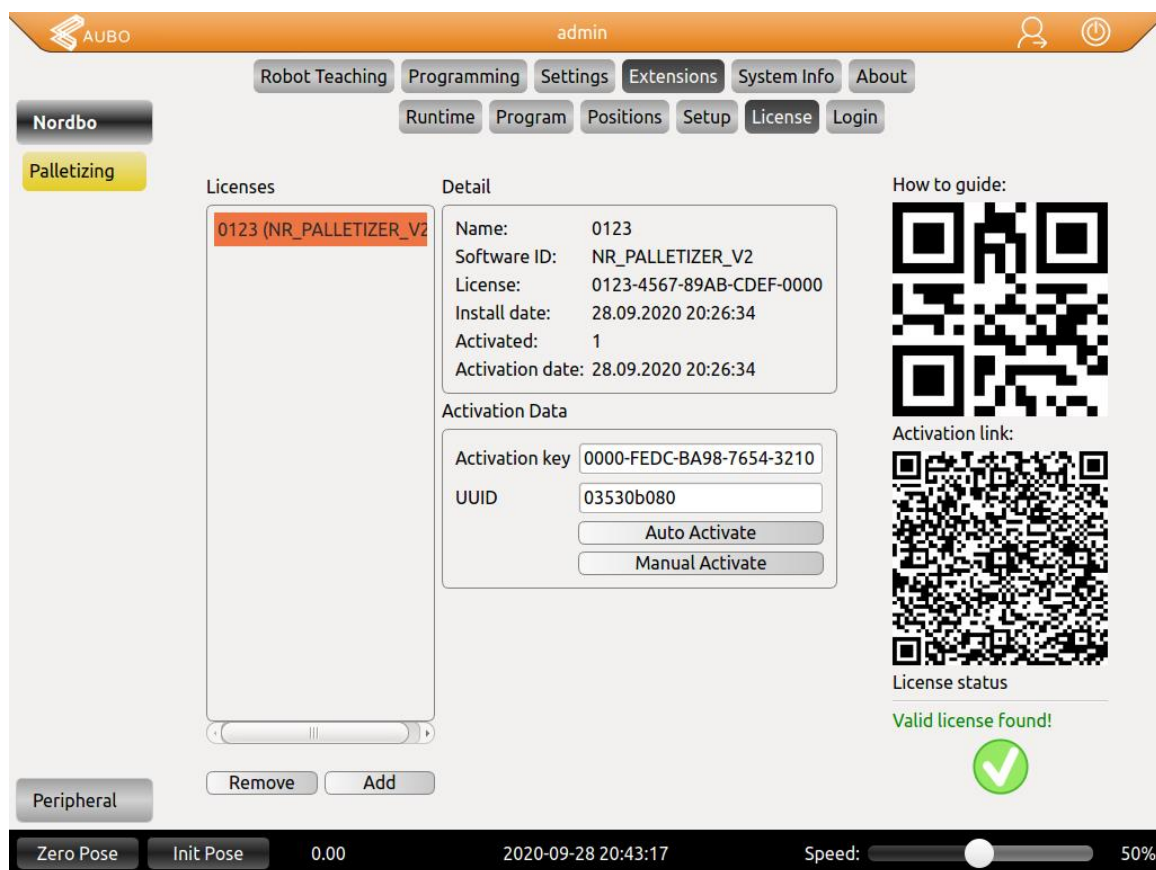


Figure 9: Extension license "Auto Activation"

## 2.2. Manual activation, QR code

### Step 4

Scan the bottom right QR code and open the website link.

### Step 5

On the Nordbo Activate website, click the “Activate” button (figure 10).

## 2.3. Manual activation, UUID

### Step 4

Open a web browser and go to [activate.nordbo-robotics.dk](https://activate.nordbo-robotics.dk).

### Step 5

On the Nordbo Activate website, type in the license key in the “License KEY” field and the UUID in the “Activation ID” field, then click the “Activate” button (figure 10).

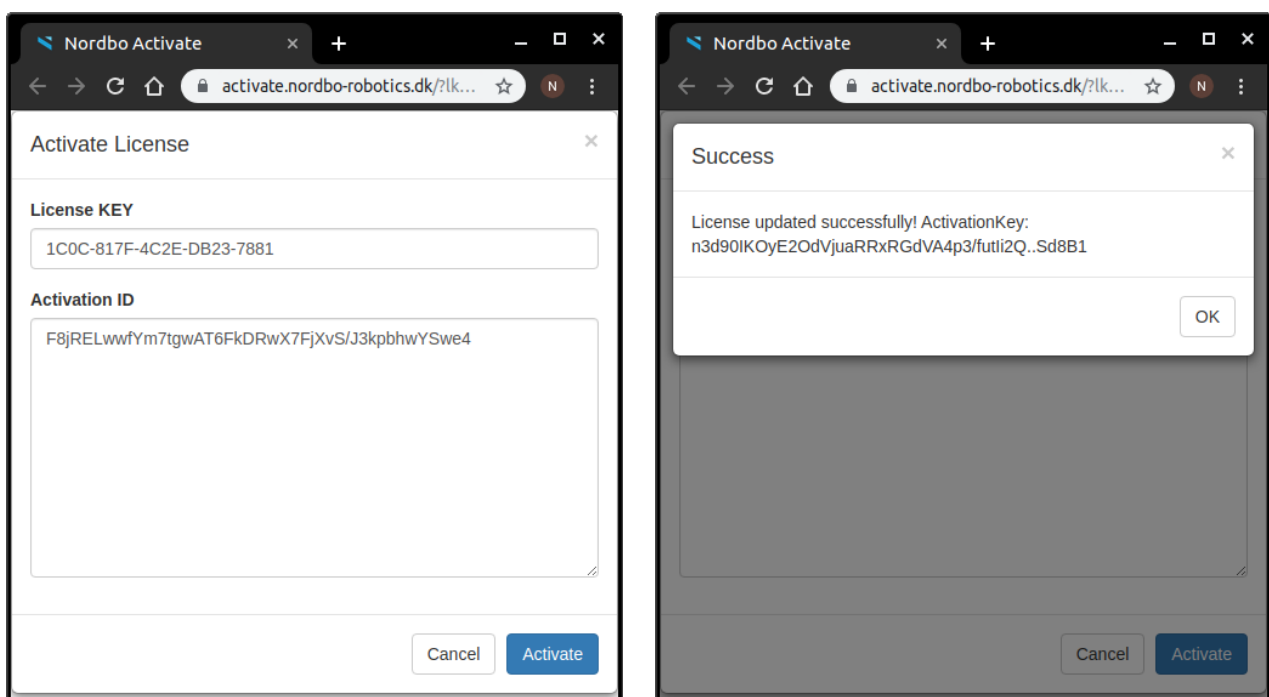


Figure 10: Activate license

## Step 6

You will receive a pop-up and an email containing a copy of the activation key sent from "Nordbo license" ([nordborobotics@web22.gigahost.dk](mailto:nordborobotics@web22.gigahost.dk)).

## Step 7

Copy the activation key from either the popup or the email.

## Step 8

Go to the "License" tab, in the Nordbo extension on the robot, click "Manual Activate", enter your "Activation Key" and click "OK" (figure 11).

## Step 9

If successful, the "License status" will now change to "Valid license found!" and your system is ready to run!

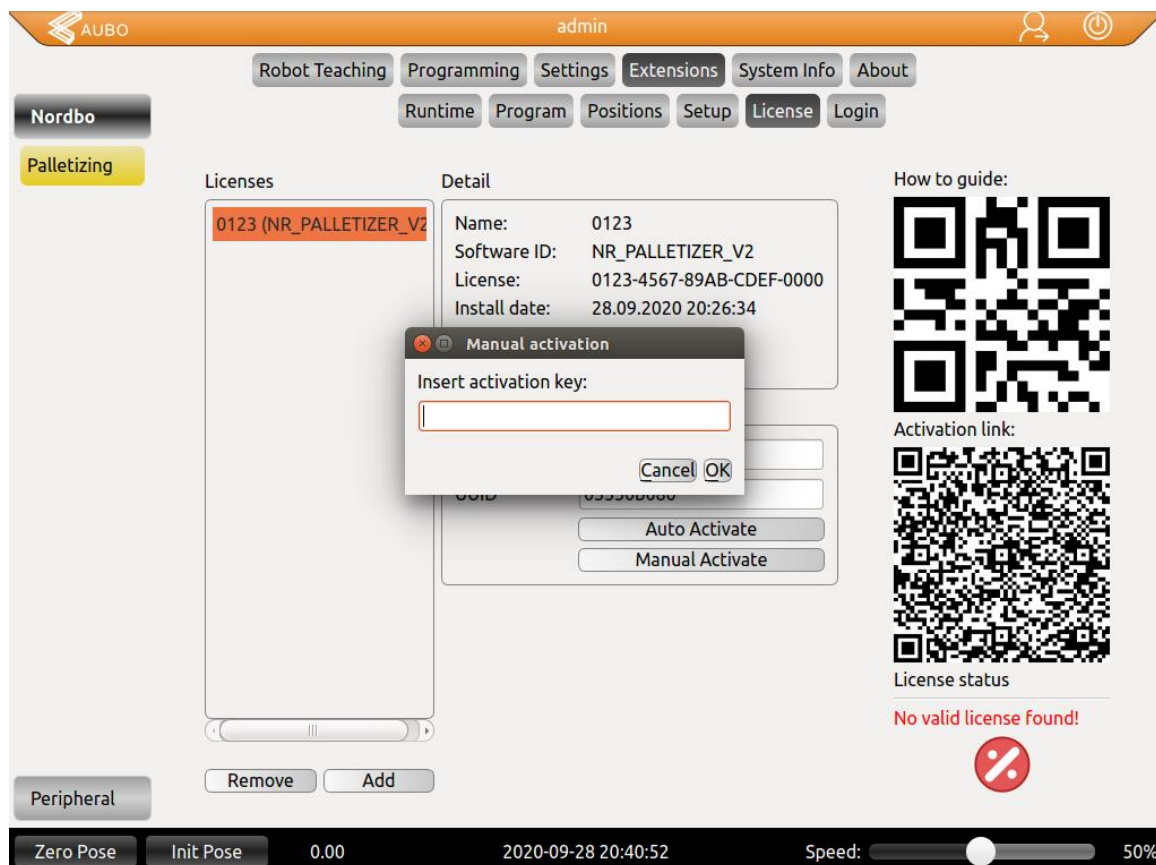


Figure 11: Insert activation key

### 3. Activating License on Universal Robots

#### Step 1

Navigate to the "Installation" tab and locate the Nordbo URCap you want to activate a license for. Then go to the "License" tab (figure 12).



Figure 12: License tab

## Step 2

Follow the steps to add a license to the system. Click "Add", to add a license, and fill out the following fields:

**Local ID:** Pick a name for the license.

**License key:** Enter the supplied license key.

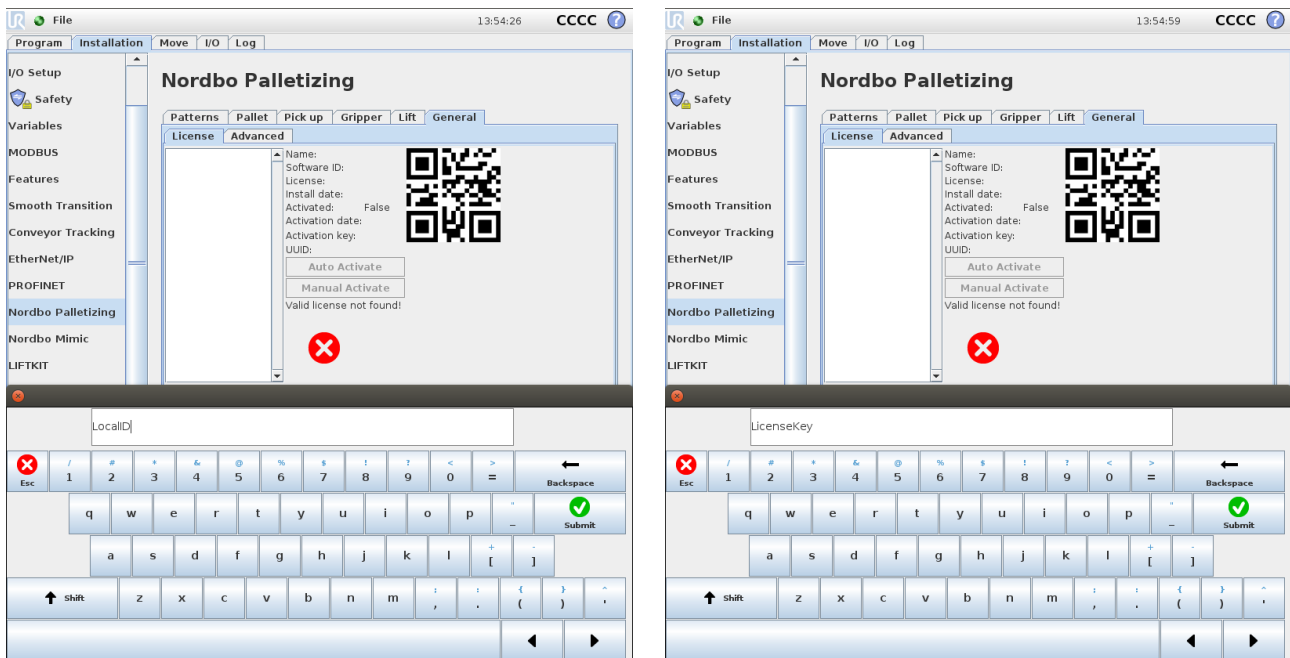


Figure 13: Add license

## Step 3

You have the option between activating using an internet connection, or by doing it manually.

### 3.1. Automatic activation

#### Step 4

Connect the robot to the internet.

#### Step 5

In the Nordbo URCap license tab, click the "Auto Activate" button (figure 14).

#### Step 6

A popup will appear, informing you of the success of the activation.

#### Step 7

If successful, the "License status" will now change to "Valid license found!" and the system is ready to run!

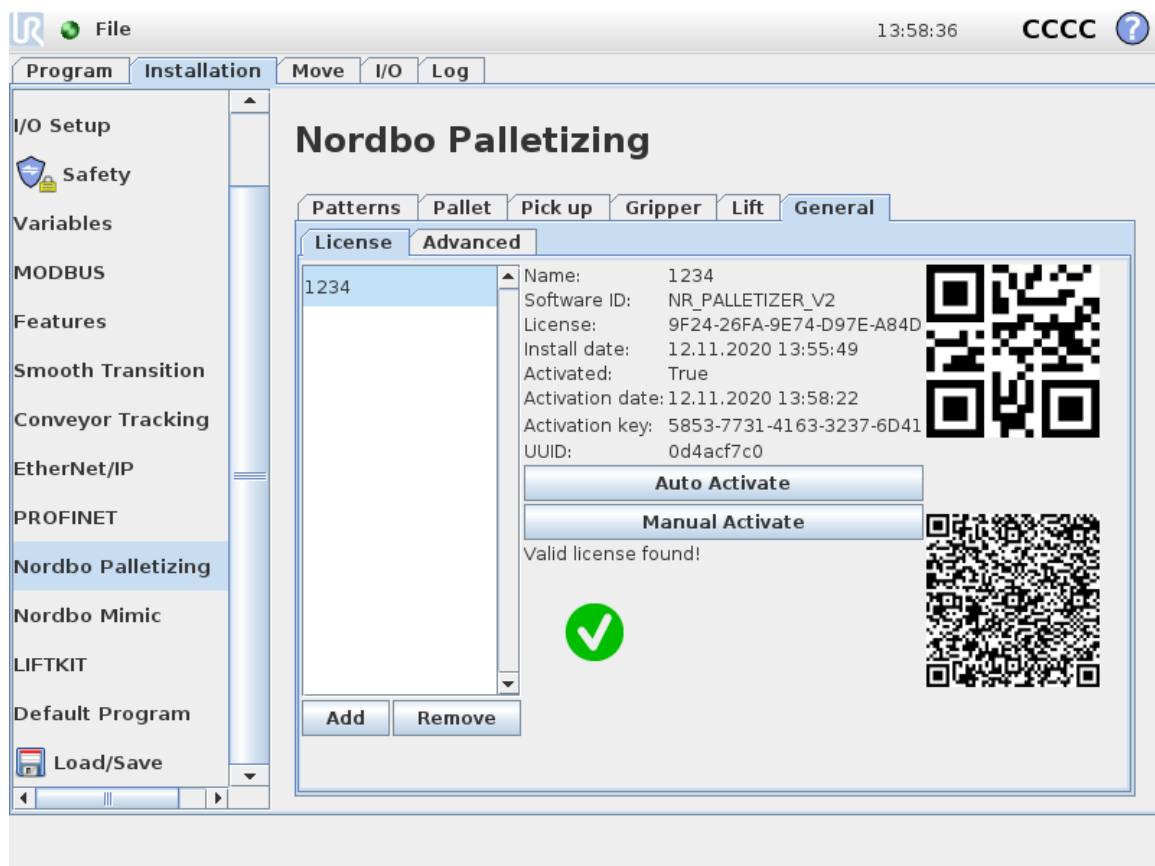


Figure 14: URCap license "Auto Activation"

## 3.2. Manual activation, QR code

### Step 4

Scan the bottom right QR code and open the website link.

### Step 5

On the Nordbo Activate website, click the “Activate” button (figure 15).

## 3.3. Manual activation, UUID

### Step 4

Open a web browser and go to [activate.nordbo-robotics.dk](https://activate.nordbo-robotics.dk).

### Step 5

On the Nordbo Activate website, type in the license key in the “License KEY” field and the UUID in the “Activation ID” field, then click the “Activate” button (figure 15).

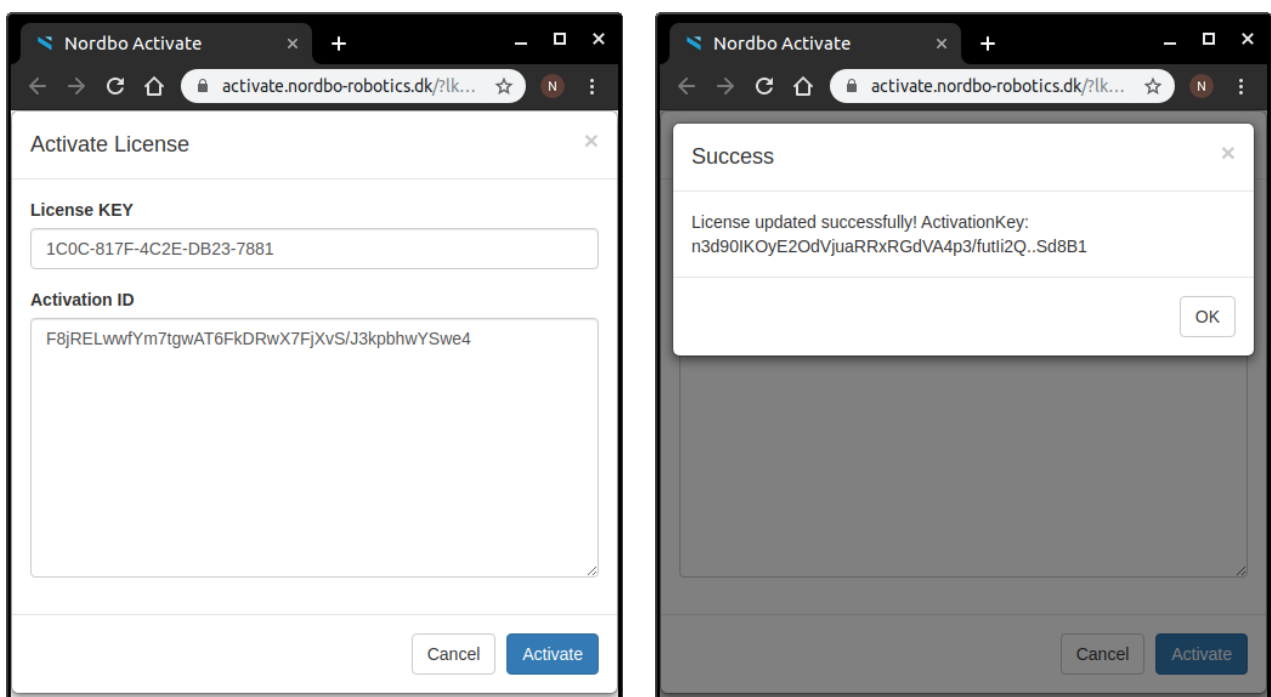


Figure 15: Activate license



## Step 6

You will receive a pop-up and an email containing a copy of the activation key sent from "Nordbo license" ([nordborobotics@web22.gigahost.dk](mailto:nordborobotics@web22.gigahost.dk)).

## Step 7

Copy the activation key from either the popup or the email.

## Step 8

Go to the "License" tab, in the Nordbo URCap on the robot, click "Manual Activate", enter your "Activation Key" and click "Submit" (figure 16).

## Step 9

If successful, the "License status" will now change to "Valid license found!" and your system is ready to run!

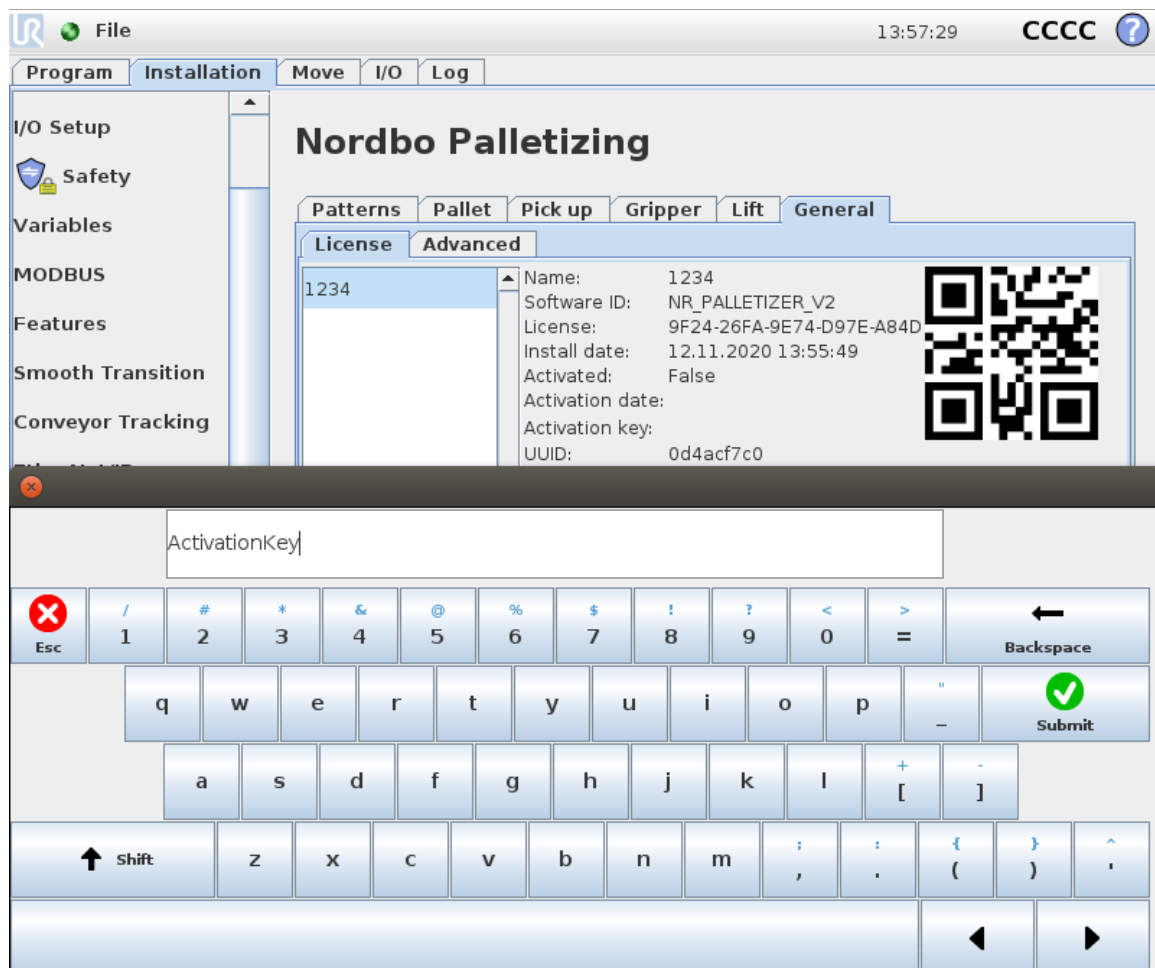


Figure 16: Insert activation key

## 4. Trial License

### 4.1. Activation of the trial license

The system must be connected to the internet before activating the trial license, as the trial license will be validated every 30 minutes, using an internet connection. The trial license is **valid for 14 days** and will be activated the same way as a regular license.

### 4.2. Frequently Asked Questions

#### What if the internet connection is lost?

If connection to the internet is lost, the Nordbo software will terminate operation.

#### What will happen when reconnecting to the internet?

After reestablishing the internet connection, the robot program can be restarted, and the robot will continue its current operation.

#### What if the robot was mid operation when the connection was lost?

Reset the robot to the start position. When connection is reestablished, the program will restart the interrupted operation.

### 4.3. Upgrading a trial license

#### Step 1

Purchase and activate a regular license as elaborated in section 1. License Activation Guide.

#### Step 2

After successfully activating a regular license, the trial license must be deleted.

Nordbo Robotics A/S  
Agerhatten 27A Entrance 4  
5220 Odense Denmark

[info@nordbo-robotics.com](mailto:info@nordbo-robotics.com)  
+45 81 81 98 81

Copyright © 2020, Nordbo Robotics A/S. All Rights Reserved.



**NORDBO**  
ROBOTICS